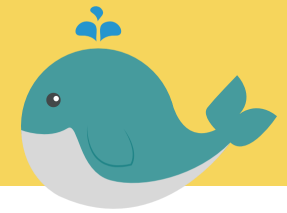


YEAR 3/4 NEWSLETTER **SPRING HALF-TERM 2**



Welcome back everyone.

We are so pleased to finally have you all back!

Last term was another strange term with Lockdown 3! The teachers had to quickly get to grips with online learning. We were all so impressed with how well our children adapted. The learning uploaded onto Seesaw was of such a high standard. We especially loved watching all of the Pied Piper videos. Children's maths skills have developed nicely during lockdown and we look forward to building on these as we return to the classroom. Many thanks to all of the parents and carers who have supported our children at home.

We are all very proud of how well our children have adapted and look forward to another term!

SPRING HALF-TERM 2

We have another fun packed term planned for this term. The title for our Topic remains as **'Terrible Tudors!'** this is a History based topic, which will continue to develop our children's knowledge of the Tudor period as well as their understanding of the differences between the rich and poor. We will celebrate this learning with a Tudor themed day on Thursday 1st April. Our English topic links to the Tudors and we will continue to study the Pied Piper. Maths sessions will focus on Multiplication, while in Science we will be learning about how to build a simple circuit and magnets. During PE our children will be given the opportunity to develop their Tennis skills. PE days are as follows 3/4CB —Tuesday & Wednesday, 3/4L Monday and Thursday, 3/4T Wednesday and Thursday, 3/4GK Wednesday and Thursday and 3/4G Monday and Wednesday. Book study will continue with 'The boy, the mole, the fox and the horse. Through our citizenship sessions we will learn about money matters.

As you can see it is going to be an extremely, busy term!

As always, we thank you for your support. If you have any questions regarding this half term's learning please do not hesitate to contact your child's teacher.

collinghams@malinbridge.sheffield.sch.uk / bosworthc@malinbridge.sheffield.sch.uk

lewisd@malinbridge.sheffield.sch.uk / grisdatec@malinbridge.sheffield.sch.uk

kotylor@malinbridge.sheffield.sch.uk / greenwoods@malinbridge.sheffield.sch.uk

connorl@malinbridge.sheffield.sch.uk / taylors@malinbridge.sheffield.sch.uk